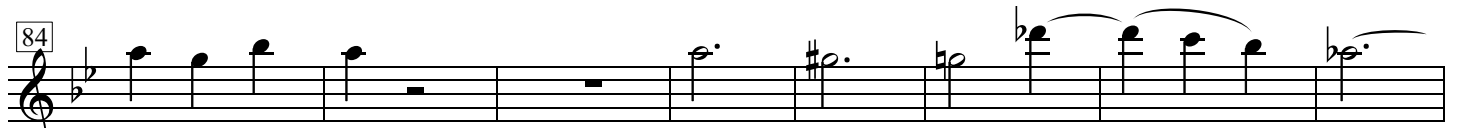
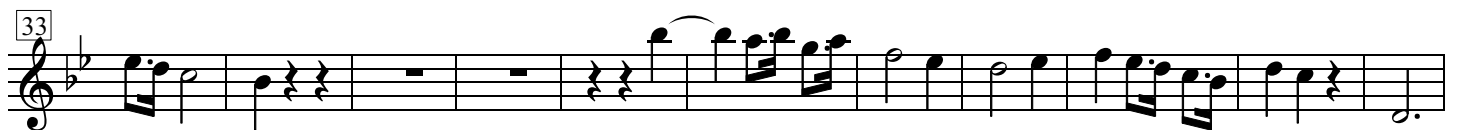


Hummel: Klar. Quartett, Satz 3

Klar.Bb

Andante



92 Musical staff 92: Treble clef, key signature of two flats, 4/4 time. Measures 92-99. Measure 92 starts with a triplet of eighth notes. Measure 99 ends with a piano (*p*) dynamic marking.

100 Musical staff 100: Treble clef, key signature of two flats, 4/4 time. Measures 100-105. Consistent eighth-note pattern.

106 Musical staff 106: Treble clef, key signature of two flats, 4/4 time. Measures 106-113. Consistent eighth-note pattern.

114 Musical staff 114: Treble clef, key signature of two flats, 4/4 time. Measures 114-127. Consistent eighth-note pattern.

128 Musical staff 128: Treble clef, key signature of two flats, 4/4 time. Measures 128-134. Measures 128-131: eighth-note pattern. Measures 132-134: triplet eighth-note patterns.

135 Musical staff 135: Treble clef, key signature of two flats, 4/4 time. Measures 135-137: eighth-note pattern. Measures 138-140: triplet eighth-note patterns.

138 Musical staff 138: Treble clef, key signature of two flats, 4/4 time. Measures 138-140: eighth-note pattern. Measures 141-143: triplet eighth-note patterns.

141 Musical staff 141: Treble clef, key signature of two flats, 4/4 time. Measures 141-143: eighth-note pattern. Measures 144-146: triplet eighth-note patterns.

147 Musical staff 147: Treble clef, key signature of two flats, 4/4 time. Measures 147-149: eighth-note pattern. Measures 150-152: triplet eighth-note patterns.

150 Musical staff 150: Treble clef, key signature of two flats, 4/4 time. Measures 150-152: eighth-note pattern. Measures 153-155: triplet eighth-note patterns.

154 Musical staff 154: Treble clef, key signature of two flats, 4/4 time. Measures 154-156: eighth-note pattern. Measures 157-159: triplet eighth-note patterns.

158 Musical staff 158: Treble clef, key signature of two flats, 4/4 time. Measures 158-164. Ends with a double bar line.