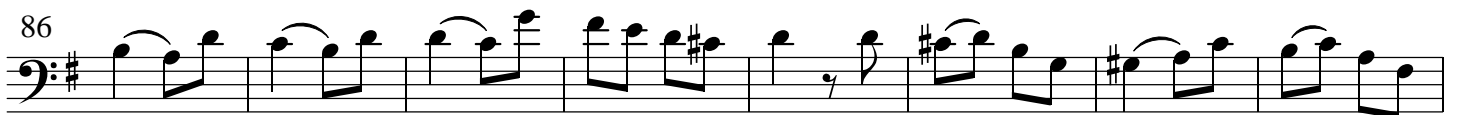
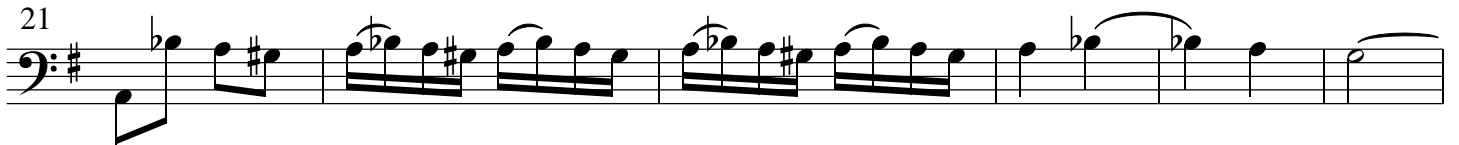


# Haydn: Presto (Arr.Ph.Lamoury)

Fagott/Violoncello



# Haydn: Presto (Arr.Ph.Lamoury)

94

101

108

116

124

132

The image shows a musical score for the bass clef of Haydn's Presto, arranged by Ph. Lamoury. The score is in the key of D major (one sharp) and consists of six staves of music. The first staff begins at measure 94 and ends with a double bar line and a repeat sign. The second staff starts at measure 101 and features a long slur over several measures. The third staff starts at measure 108 and contains a complex rhythmic pattern. The fourth staff starts at measure 116 and includes a measure with a whole rest. The fifth staff starts at measure 124 and ends with a double bar line and a repeat sign. The sixth staff starts at measure 132 and concludes the piece with a final cadence.