

# Haydn: Trio Hob. V:C7

I Andante

1. Stimme in C

musical score for the first voice of Haydn's Trio Hob. V:C7, I Andante. The score is written in treble clef, 4/4 time, and C major. It begins with a repeat sign and a mezzo-forte (*mf*) dynamic marking. The melody features various ornaments, including trills (*tr*) and grace notes. Fingerings are indicated by numbers 4, 7, and 9. The score includes several sixteenth-note runs, some marked with a '6' for sixteenth notes, and a triplet of eighth notes. The piece concludes with a repeat sign and a final cadence.

4

7

9

10

12

14

18

21

*mf*

*tr*

*tr*

6

6

6

6

3

3

*tr*

24

28

31

33

35

37

This musical score segment contains measures 24 through 37. It is written in treble clef. Measure 24 begins with a treble clef and a key signature of one flat (B-flat). The music features eighth and sixteenth notes, with a triplet of eighth notes in measure 25. Measures 28-30 contain sixteenth-note runs, with measure 29 featuring a triplet of sixteenth notes. Measures 31-33 continue with sixteenth-note patterns, including a triplet in measure 33. Measures 35-37 conclude the segment with a final triplet in measure 37, ending with a double bar line and repeat dots.

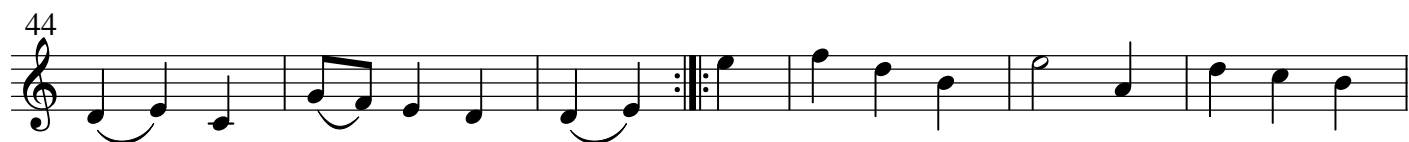
## II Menuett

*mf*

6

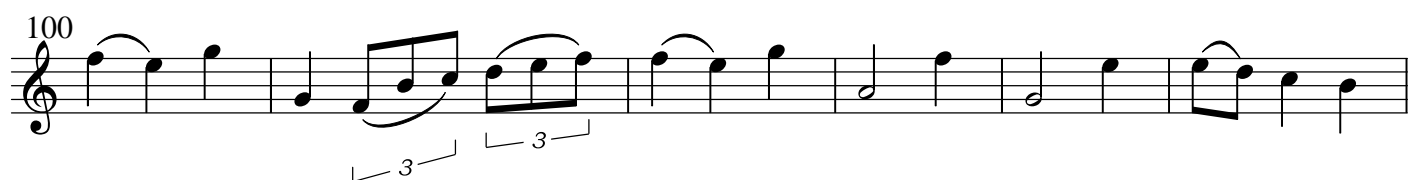
11

This musical score segment contains measures 1 through 11 of the piece 'II Menuett'. It is written in treble clef with a 3/4 time signature. The key signature is one flat (B-flat). The piece begins with a repeat sign in measure 1. The dynamics are marked *mf* (mezzo-forte). Measures 6-8 feature triplet markings over eighth notes. Measures 10-11 continue the melodic line with triplet markings over eighth notes. The piece ends in measure 11 with a double bar line.

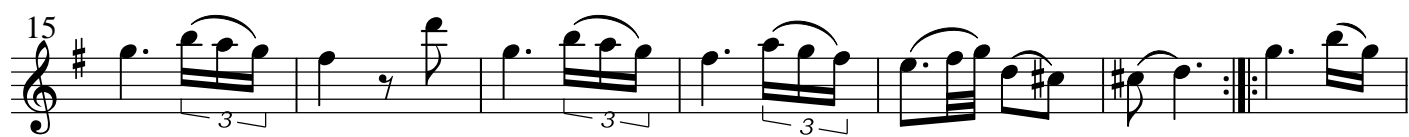
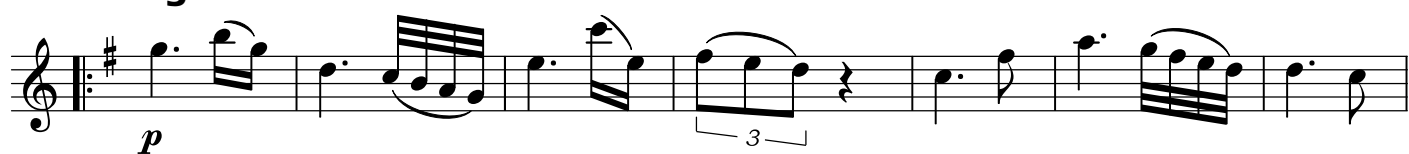


Menuett D.C.





### III Adagio



29

Musical notation for measure 29, featuring a treble clef, a key signature of one sharp (F#), and a 4/4 time signature. The melody consists of eighth and sixteenth notes with various accidentals.

Measures 37-40 of the piece. Measure 37 starts with a treble clef and a key signature of one sharp (F#). The melody consists of eighth and sixteenth notes, with triplets indicated by a '3' in a bracket. Measure 38 continues the melody. Measure 39 features a triplet of eighth notes. Measure 40 concludes the phrase with a double bar line and repeat dots.

## IV Presto

The first staff of music is in treble clef and 2/4 time. It begins with a treble clef and a key signature of one sharp (F#). The melody starts with a quarter note G4, followed by a quarter note A4, then a quarter note B4. A triplet of eighth notes (C5, D5, E5) is marked with a '3' and a bracket. This is followed by a quarter rest, then a quarter note D5, a quarter note C5, and a quarter note B4. A slur covers the next four notes: D5, E5, F#5, and G5. This is followed by a quarter rest, then a quarter note G4, a quarter note F#4, and a quarter note E4. The staff ends with a double bar line.

Measures 17-20 of the song. Measure 17: Treble clef, key of D major (F#), 4/4 time. Notes: D4 (quarter), E4 (quarter), F#4 (quarter), G4 (quarter), A4 (quarter), B4 (quarter), C5 (quarter), D5 (quarter). Measure 18: Treble clef, key of D major (F#), 4/4 time. Notes: D4 (quarter), E4 (quarter), F#4 (quarter), G4 (quarter), A4 (quarter), B4 (quarter), C5 (quarter), D5 (quarter). Measure 19: Treble clef, key of D major (F#), 4/4 time. Notes: D4 (quarter), E4 (quarter), F#4 (quarter), G4 (quarter), A4 (quarter), B4 (quarter), C5 (quarter), D5 (quarter). Measure 20: Treble clef, key of D major (F#), 4/4 time. Notes: D4 (quarter), E4 (quarter), F#4 (quarter), G4 (quarter), A4 (quarter), B4 (quarter), C5 (quarter), D5 (quarter).

24

*f*

[illegible]

39

Measure 39 of the piece 'The Rose Tree' in G major. The measure is divided into six parts by vertical bar lines. The first part contains a beamed eighth-note triplet (G4, A4, B4) followed by a quarter note (G4). The second part contains a beamed eighth-note triplet (A4, B4, C5) followed by a quarter note (A4). The third part contains a beamed eighth-note triplet (B4, C5, D5) followed by a quarter note (B4). The fourth part contains a beamed eighth-note triplet (C5, D5, E5) followed by a quarter note (C5). The fifth part contains a sharp sign (#) followed by a quarter rest. The sixth part contains a quarter note (D5) followed by a quarter rest.

45



51

52

53

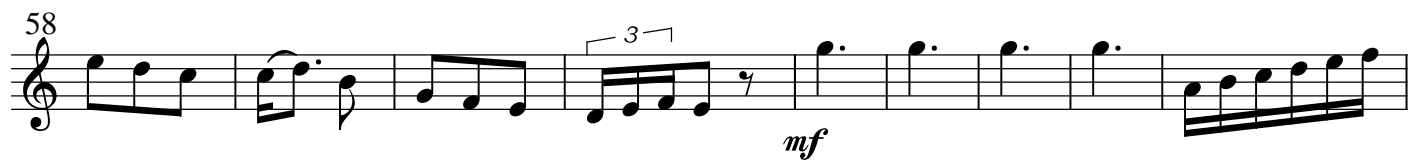
54

55

56

*f*

3



**EH V1.0**