

Händel: Sonata in B flat

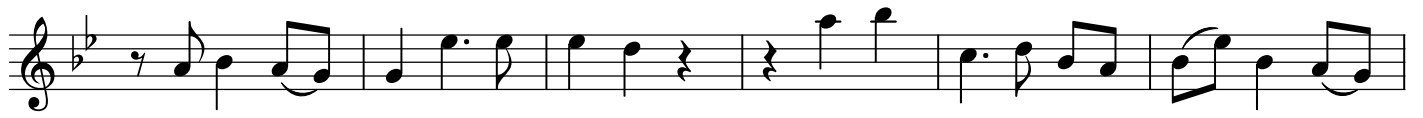
Andante

Oboe

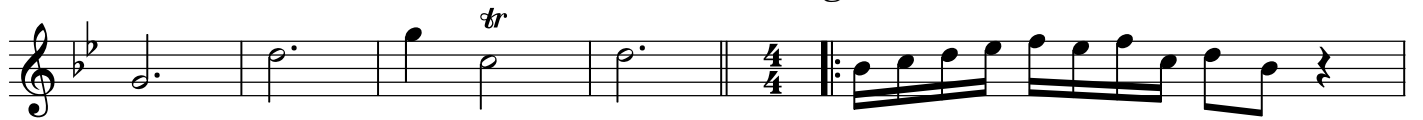
Musical score for Oboe, Andante section. The score consists of eight staves of music in B-flat major, 4/4 time. The first staff begins with a treble clef, a key signature of two flats, and a 4/4 time signature. The music features a variety of rhythmic patterns, including eighth and sixteenth notes, and rests. A trill (tr) is marked above the second measure of the first staff. The second staff continues the melodic line with similar rhythmic values. The third staff shows a continuation of the theme. The fourth staff contains a first ending (1.) and a second ending (2.), both marked with repeat signs. The fifth staff continues the melodic development. The sixth staff features a trill (tr) above the second measure. The seventh staff continues the melodic line. The eighth staff concludes the section with a trill (tr) above the second measure.

Grave

Musical score for Oboe, Grave section. The score consists of two staves of music in B-flat major, 3/4 time. The first staff begins with a treble clef, a key signature of two flats, and a 3/4 time signature. It features a first ending (1.) and a second ending (2.), both marked with repeat signs. The second staff continues the melodic line with a slower tempo and includes a trill (tr) above the second measure.



Allegro



Musical score for a single melodic line in G minor, 3/4 time, consisting of four staves. The first staff begins with a treble clef, a key signature of two flats (B-flat and E-flat), and a common time signature. The melody is written in a single line with various rhythmic values including eighth and sixteenth notes, and rests. The fourth staff concludes with a repeat sign and two first/second endings.

EH V1.0